

(expleo)

Dado Panel Repair and improvement kit

Expleo is offering a simple and cost effective solution for B737 Dado panels. Most dado panels show broken attachments during checks. This repair kit can be used for easy repair and also for preventative improvement of the panels.



Repair Kit:

- For repair or preventative improvement
- 3D printed ALM part
- Delivered with Form One
- EASA DOA Repair Approval
- Delivered to your MRO
- Made in Germany

Procedure:

- Repair of complete shipset (unexpected) lease return
 - Quick availability of parts
 - Approval within 3 weeks
- Repair of pre-defined parts during maintenance checks (e.g. C-Check)
 - Prepared parts incl. approval (no lead time)
 - Repair/ modification within 1 day



B737 Dado Panel



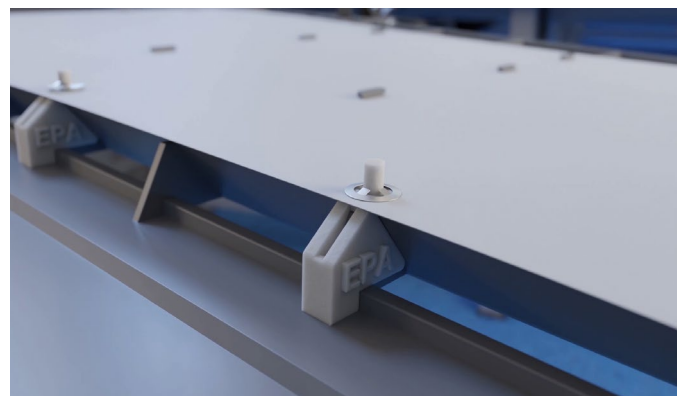
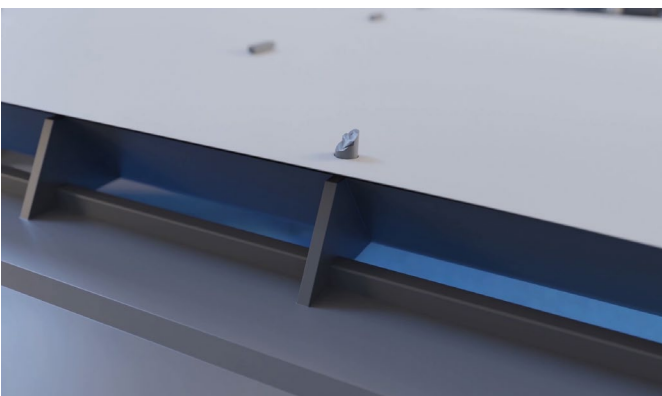
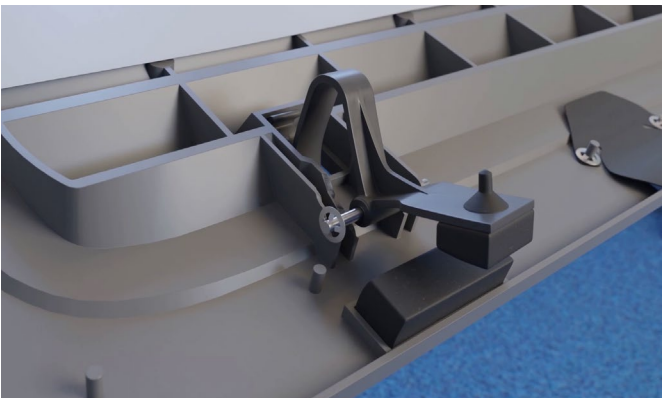
B737 Dado Panel repaired and improved

Common faults

- 4 common damages detected:
 - Lever axis holder break out
 - Spring attachment break out
 - Upper pin attachment break out
 - Lower pin attachment break out

Key characteristics

- 90% of panel P/N's repairable
- Short delivery time
- ALM parts applicable for B737 family
- Repair of existing breakage
- Improvement by preventative modification
- Delivery includes Form 1 and EASA repair



For further information or a quote please contact joachim.lau@expleogroup.com